

# LASERPOINT

## Welcome to Lüneburg

**Even Bigger - Even Better**



**High Quality Textiles -  
eurolaser Systems In Operation**

**Successful  
eurolaser  
Customers**

**Brilliance with an elegant look  
Craftsmanship & Precision**

**Closer to the customer  
Udo Weustenhagen strengthens the sales team**

.....

**New dimensions in the textile processing  
eurolaser introduces the LCS 3XL-3000**

## Leave your mark

Dear readers and  
business friends

In the meantime your laser leaves its mark on over 10,000 different materials and only a few of you really know the many universal and exciting fields of application for which eurolaser technology is now responsible. But from today onwards this is going to change.

A warm welcome to the first edition of Laserpoint 2010 - our information platform that will leave its mark on you personally. This year will again see us making every effort to provide you with concise and up-to-date information about technical developments and applications in all aspects of laser technology. We also hope to stimulate and raise questions that we will be glad to discuss with you in order to work together towards finding practical solutions.



We wish you all success  
M. Kluczinski & H. Hasse

# Welcome to Lüneburg

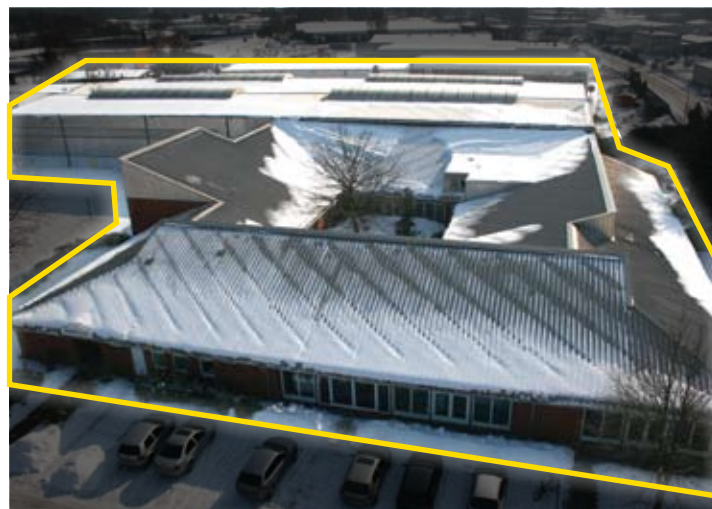


## Even bigger – even better

**eurolaser GmbH has doubled the amount of space it has available for the world of laser technology with its move to the new company premises in Lüneburg on 1st October 2009. We now have over 5,000m<sup>2</sup> of research, production, showroom, storage and office space at our disposal for developing and manufacturing pioneering technologies for various laser processing.**

### Space opens up new possibilities

"We think progressively" making full use of the technological expertise we have gained in more than 15 years in the business. From now on the company with its 60 employees will be focussing even more closely on the specialist industrial and handcraft markets from its new location in Lüneburg. This quarter will see a competent and transparent advisory centre – in terms of new concepts for material processing using laser technology - take up the challenges of international manufacturing companies.



The new company building

Significant innovations mean that "growth in times of crisis" is possible even for capital goods. We take our lead here strictly from customer requirements. This involves most especially time and space plus investigative research into production processes, choice of materials and the latest quality demands of users.

"Facts count" This formula does not apply solely to new production opportunities with regard to machine construction, but in particular to the effect of the laser beam on a wide range of different fabrics and materials. An extended application center in the company with the appropriate capacity for research and development is also a basic requirement for successful operation in the technological field.

Close cooperation with institutes, local universities and users round off the formula for success. There should be even space and open windows for students exchange and progressive education joint ventures with public schools.







The showroom, prepared for live sessions




“Sustainability”, the right choice of peripherals such as cooling, exhaust and filter systems or material handling technologies plus training, instruction in safety and maintenance services all come together to form a highly-qualified all-round support package. For all questions – from application right down to complex software integration on site the qualified team will support markets anyway.



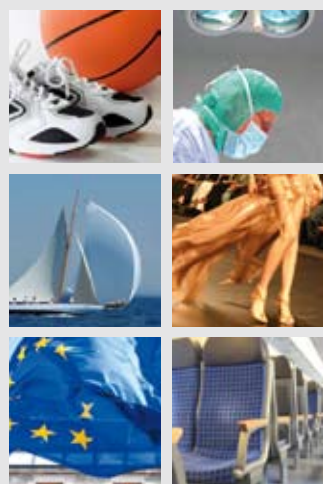
### Company history

Founded in Hamburg-Harburg in the year 1994 the headquarters of eurolaser GmbH have been located in Seevetal-Meckelfeld since 1999. It would have been impossible to implement the expansion and extension that had been decided upon in 2008 on these premises. An interestingly designed object in a Lüneburger industrial estate with a direct link to the motorway was found after an intensive search

in the southern catchment area of the economic metropolis of Hamburg. “This means we can now development other technologies on our premises and expand our company horizontally in the laser sector”, explained the founder and shareholder Matthias Kluczinski, whose inspiration and groundbreaking ideas have played a vital role in the success story of eurolaser right from the very start. 



The manufacture



**3XL**

Textile processing off the roll now possible up to 3200 mm width

**3XL**

Increased productivity by automatic material feed for the continued processing of textiles

**3XL**

Processing of very large materials with seamless cuts possible

**3XL**

Unlimited processing and forwarding of data from other system producers (ISO RS274D, DXF, HPGL, even Lectra) with flexible software packages

**3XL**

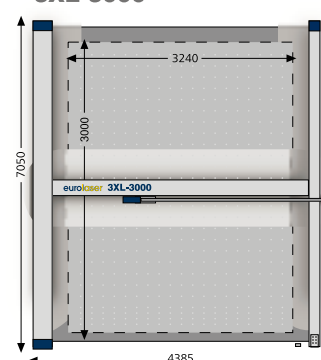
Extensible with tailor-made options: automatic camera recognition system, software solutions (e.g. nesting, workflow manager), marking systems and many more

# New dimensions in the textile processing

## eurolaser introduces LCS 3XL-3000

**With a maximum processing area of 3240 x 3000 mm the LCS 3XL-3000 allows the laser processing of large-sized materials. The 3XL-3000 is the largest laser processing system ever produced by eurolaser, whereby the width of the system has been enlarged by 540 mm in total compared to the systems produced up to now.**

**3XL-3000**



Where other systems have limited capacities yet due to their size the new system by the eurolaser GmbH makes the deal. The textiles to be processed are fed to the system which is supplied with a conveyor directly off the roll and processed. The seamless cut conduction increases the productivity and optimises the material consumption. The automatic feeding system can handle material bales with a width of up to 3350 mm.

The 3XL-3000 can be supplied with all lasers and laser powers from 60 to 600 W that are used in the other LCS systems. The processing speed is freely selectable between 1 and 1000 mm/second. Various additional options as for example automatic camera recognition, marking systems or tailor-made software solutions - among others nesting functions and workflow management - increase the benefit

and save time and money in the production.

The processing and forwarding of data from other system producers (ISO RS274D, DXF, HPGL, Lectra and many more) is unlimited, thus enabling the 3XL-3000 to be integrated into already existing production environments without change or difficulties.







Laser processed textiles for interior design

## Successful eurolaser customers

# High quality textiles – eurolaser systems in operation

**The wonderful country of Switzerland is synonymous with Schwyzer dutsch, schoggi (chocolate), Alphorns, hi-tech and an intoxicating blaze of colours. And you will find a concentrated dose of this special form of intoxication for the visual senses at Création Baumann, that is to say 6000 different colour variations for textiles – pure pleasure with no risk for life and limb or your driving licence.**

**C**réation Baumann is an independent family run business that designs, manufactures and sells high quality textiles for interior facilities all over the world. But if you think the company is just another textile manufacturer, then you are mistaken. Quite the opposite, it is synonymous through out the world for beauty, a sensual feeling of well-being and tailor made curtain systems that meet the highest of aesthetic requirements.

Admittedly it may seem strange that we do not cultivate our own cotton fields in Langenthal, there is no herd of sheep grazing on the company's lawn either to supply us with wool. But we Swiss have united all the other

steps in the textile value-added chain under one roof. From our own weaving and dyeing mills down to our own design atelier where we create unconventional, extravagant or, to put it in a nutshell, quite simply beautiful things.

Among other things, our product range includes customized creations for interior shading systems as well as light control, dimming and sound absorption solutions and - last but not least - our laser collection, i.e. textiles that are expertly enhanced using a large size eurolaser LCS-2XL laser cutting system (with a work surface measuring 2700x3000 mm). So you see both are possible in seemingly tranquil Swit-



zerland: international competitive power thanks to investment in new technologies plus the extra benefit of having aesthetic and functional demands met to the full.

Switzerland is always well worth visiting. And when you are there, what better souvenirs could you

ask for than schoggi, Alphorns or textiles from Création Baumann?

**CRÉATION BAUMANN**  
**Weberei und Färberei AG**  
**Bern-Zürich-Strasse 23**  
**4900 Langenthal**  
**Schweiz**  
[www.creationbaumann.com](http://www.creationbaumann.com)

# eurolaser heads into the future in an even stronger position

## Even closer to the customer

The eurolaser sales team has expanded to include a new member since October 2009. Udo Weustenhagen, our new Area Sales Manager, has taken charge of the southern German area plus its bordering countries.



The eurolaser sales team

Mr Weustenhagen is now available to give you reliable advice and active support for all the questions your company might have concerning the topic of laser technology. Thanks to the many years of experience in laser cutting systems, the commitment and expertise of our staff you can be sure of competent and lasting professional support and excellent cooperation at all times at eurolaser.



Udo Weustenhagen

# Craftsmanship + Precision

## Plywood candle arches

It is a well-known fact that technological innovations pave their own way. The initial reaction was to snigger, but this quickly changed to admiration after only a few impressive examples and today laser technology has established itself firmly as a major technology in the artistic sector of wood processing.

In the meantime innovative artistic forges in Germany also produce filigree designs in the famous regions such as Sauerland, the Black Forest and the

Erz Mountains. The use of extremely focused laser light by no means replaces traditional wood craftsmanship - but enhances it significantly! Ultra fine contours (see picture on the right) can be produced with the contact-free cut and laser technology creates excellent cutting results even in the case of printed woods. The slight oxidation (dark colouring) on the cutting edge is in part intended, but it can be reduced significantly by choosing the right type of wood, by regulating the moisture con-



Extremely fine contours due to contactless cutting



tent and by selecting the right kind of gluing components (UF resin glue). Apart from the cutting performance for plywood types with thicknesses of up to 10 mm, the thermal processing also allows a whole range of engraving applications that are rich in contrast. Vector engravings, pixel images as well as

relief work with 3-D effects can all be created in wood with excellent results. Depending on the required productivity laser power from 100 to 400 watts are used in those applications.



# Brilliance with an elegant look

## Printed acrylic shoots

**An advertising sign is the classic among sign-marketing products. Even in earlier times, before today's technical possibilities, companies and businessmen used such signs to attract attention to their businesses and their products. Initially made with chalk and a black-board or by using the artistic skills of advertising sign designers.**

**F**inding favour with customers is more important nowadays than ever before. Only those who excel as above average, who can arouse enthusiasm and thus awake a desire to buy in customers can maintain a competitive edge in many sectors.

Is there anyone who does not linger in front of a high-gloss grand piano in a showroom? There is no one who does not give a second look if a blaze of colour in top image quality with

exciting motifs catches their eye!

This can be achieved easily nowadays thanks to advanced digital printing. The second aspect then determines the choice of material. Time after time it is acrylic (Plexiglas) that proves the ideal material, as this incorporates so many benefits. In addition to the extensive range of acrylic glass to choose from, it is also easily available all over the world. Acrylic plates, whether printed or moulded, can



Clear, smooth cutting edges



Personalized plates



now be processed with laser in sandwich print with excellent results. High-quality photo prints, back printed onto a 1 - 4 mm thick acrylic glass plate are impressive with an above-average brilliance (see picture on the right), create an elegant look, are protected and upgrade every product advertisement many

times over. Colours & glamour will gain in importance in the year 2010. Laser offers you every imaginable contour. In an age of high-resolution flat screens the customer's eye has become attuned to top quality. Who would voluntarily want to fall behind?



# eurolaser – personalities

## New recruitments

Name	Profession	Start of employment
Udo Weustenhagen	Area Sales Manager	01.10.2009
Tobias Brandt	Office administrator training course	01.08.2009
Annika Franz	Office administrator training course	01.08.2009
Dennis Sawadsky	Industrial clerk training course	01.08.2009
Thorben Peters	Apprenticeship in mechatronics	16.11.2009
Patrick Rinas	Dual course of studies for master of business administration	01.08.2009

## Anniversaries

Name	Date	Years
Ulf Fleischfreßer	01.09.2009	5
Mursal Avci	06.12.2009	5



## Births

Name Parents	Name Baby	Date of birth
Ralf & Petra Hinrichs	Romy	11.05.2009
Diana & Lars Jeremias	Noah Henry	05.10.2009



## Marriages

Name of the married couple	Date of the marriage	Place
Christian & Ina Otte	07.08.2009	Seevetal - Hittfeld
Ralf & Petra Hinrichs	20.03.2009	Hamburg - Altona



## Trainees that have been taken on

Name	Date	Departement
Mike Pietrusiak	21.01.2010	Purchasing departement
Christina Loch	21.01.2010	Marketing



## Examinations passed

Name	Date	Beruf
Mike Pietrusiak	20.01.2010	Office administrator
Christina Loch	20.01.2010	Office administrator
Karlo Yako	28.01.2010	Mechatronics technician

### Editor:

eurolaser GmbH  
Borsigstraße 18  
D-21339 Lüneburg

Tel.: +49 (0) 4131 9697-500  
Fax.: +49 (0) 4131 9697-555

Internet: [www.eurolaser.com](http://www.eurolaser.com)  
E-Mail: [sales@eurolaser.com](mailto:sales@eurolaser.com)

**eurolaser**  
Partner for your success.

## Important dates

### Dealer support

Good service is a key factor in our „Concept of Partnership“. Regular training for our dealers and partners is therefore a major requirement

### Basic Service Training at eurolaser (DE)

**08.-12. March**

### Advanced Service Training at eurolaser (DE)

**15.-17. March**

### eurolaser Workshop (DE)

**18.-19. March**

## EUROREKLAMA<sup>®</sup> OUTDOOREXPO

### Euro-Reklama in Poznan (PL) 10.-12. March

We will be presenting our M-1200/400W Laser Cutting System in Hall 3 / Stand 92 at this year's Euro-Reklama

## Reklama POLYGRAF

### Reklama in Prague (CZ) 23.-25. March

We will be presenting our M-1200/400W laser system and demonstrating the engraving of acrylic and plywood.



### ISA Sign Expo in Orlando (US) 8.-10. April

We will be demonstrating the possible applications of our systems in the advertising branch, for example the production of displays, at this international trade fair.