



LASERPOINT

eurolaser goes Haute Couture

**The finest design -
cut with laser**

eurolaser in-house exhibition 2010

What was it really like in Lüneburg?

The XS-610 laser system – our all-rounder!

Flexibility with laser technology

Stylish communication ideas that promote sales

Successful eurolaser customers

Shaping the future

Dear readers

Thinking ahead and skilful steering are the surest way of shaping the future. The turbulent year 2010, a year initially locked in the tight grip of the economic crisis, has now managed to break free of the restricting manacles in its second quarter. We have been receiving powerful impulses from all market segments since then.

Forge ahead into new manufacturing strategies and economic branches – this is our motto for the approaching year 2011. We are ready to stand shoulder-to-shoulder with our customers and all laser users to ensure a sustainable future in the many different branches. Innovations in both hardware and software are just one part of this strategy. It goes without saying that we will always be available with our support, especially in difficult times. We hope our articles will inspire you and persuade you to play a part in a joint laser future.



We wish you all success,
M. Kluczinski & H. Hasse



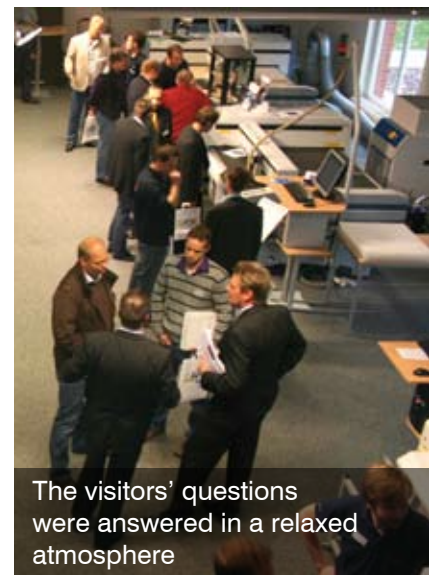
eurolaser in-house exhibition 2010

What was it really like in Lüneburg?

EUROLASER'S IN-HOUSE EXHIBITION WAS HELD FROM 7TH TO 8TH OCTOBER 2010 UNDER THE SLOGAN „EXPERIENCE THE VERSATILITY OF LASER TECHNOLOGY“. IN THE NEW SHOWROOM, VISITORS WERE ABLE TO EXPERIENCE LIVE HOW LASER TECHNOLOGY IS USED TODAY IN WIDELY DIFFERING APPLICATIONS. EIGHT DIFFERENT LASER SYSTEMS WERE RUN IN PARALLEL TO DEMONSTRATE THE VERSATILITY OF THE LASER AS AN INNOVATIVE TOOL.



Specialist presentation given by Evonik (Röhm/Degussa) on the topic of acrylic or rather Plexiglass machining



The visitors' questions were answered in a relaxed atmosphere



Visitors receiving the latest information about new products in our showroom

Frank Matschke, Manager of the Applications Centre: „Our guests were particularly interested in how machining processes can be automated and optimised. Many improvements to individual components and some significant innovations enabled us to satisfy the great interest in practice, and positively surprise many visitors.“

Along with the live demonstrations, presentations on different subjects were also on offer. The spectrum ranged from company overviews and typical applications of the laser for industrial purposes to future prospects for this technology. A particular highlight was the series of lectures presented by Evonik (Röhm/Degussa), one of the largest manufacturers of acrylic (Plexiglas).

During the guided tours, in which the whole building complex was presented and explained, interested parties were also able to see for themselves eurolaser's well organised business procedures and processes. The tours

not only included the comprehensive Applications Centre, but also the generously laid out production and stores areas.



The mayor of Lüneburg Mr E. Kolle with the eurolaser shareholders M. Kluczinski and H. Hasse.

Insights were also provided into the Research and Development Department, which develops individual solutions with and for the customer, and is therefore always abreast of the latest market requirements.

Matthias Kluczinski, Partner in eurolaser GmbH: „The exhibition demonstrated to us that we have

set the right priorities in recent years. We were able to put on the ideal event for our customers in our new, expanded facilities. Anyone who was unable to afford the time to attend our in-house exhibition is of course welcome to visit us in Lüneburg to see for themselves the quality of our laser systems.“



The eurolaser team was pleased to welcome so many interested visitors



Technical running shoes made of the best materials

Shoe manufacture using laser systems

RUNNING SHOES MADE IN GERMANY – UNDER THIS MOTTO THE BROTHERS ULF AND LARS LUNGE DECIDED TO START UP A RUNNING SHOE FACTORY IN GERMANY

The Lunge Laufschuhmanufaktur develops and produces technical running shoes for both hobby joggers and professional runners alike. The aim of the Lunge brothers is to manufacture comfortable, extremely high-quality running shoes from the best materials for every kind of runner. In addition they believe in responsible and sustainable production, so particular con-

sideration is given to ecological and social issues in the manufacturing process.

The success story of the Lunge company started with a specialist shop for sports shoes in Hamburg. In the meantime the company has six run shops in Hamburg and Berlin. Since 2008 they have been producing running shoes in their own manu-

factory, whereby the founders' own running and marathon experience has greatly influenced the development of particularly goods shoes.

Great importance is placed on the selection of the materials and optimum workmanship in order to ensure they always deliver the high quality expected by their customers. On principle

the materials used are all free of pollutants and have often been used successfully on the market for decades. The selected materials are ideally processed thanks to the state-of-the-art production facilities. The material for the shoe uppers are cut on a eurolaser system, that has been part of the machine park from the word go. A big advantage of this technology is the thermal



The shoe uppers are cut accurately with the laser system

process that welds the cutting edges thus preventing any subsequent fraying. This does away with the need for any preparatory or finishing work.

Ulf Lunge : "Flexible shoe parts that need no die-cutting and that can be flawlessly reproduced from different materials make our eurolaser system the very

centrepiece of the Lunge production"

Many years of experience in the market and sophisticated, state-of-the-art technical equipment ensure that the Lunge Laufschuhmanufaktur is well positioned for achieving its aims for the future. So there is nothing standing in the way of the planned expansion of the range.

Even the purchase of another eurolaser system is in the pipeline.

Anything else is just makeshift – Lunge manufactory! ■

Lunge Laufschuhmanufaktur
Schloßstrasse 8a
19273 Düssin
Germany
www.lunge.com



The range of high-quality running shoes is being expanded continuously



eurolaser innovations and new products

Profitability thanks to high-speed marker

CO₂ lasers offer impressive results in the marking of organic and inorganic materials. A very high degree of detailed accuracy and long-lasting markings are the outstanding features of this marker.

The benefits of CO₂ laser markers at a glance:

- Very fast operating speeds
- Made in Germany
- Economical to operate
- Low maintenance (sealed-off CO₂ laser)
- Integrated laser pointer (positioning aid)
- Plug & Play via USB 2.0
- User-friendly operation
- No mechanical stressing of the workpiece
- High degree of flexibility, short setup times
- Accuracy down to the last detail
- Long-lasting markings
- High quality of the laser marking



QuickMark

The compact marking lasers from eurolaser require very little space, operate reliably and accurately and are designed for use in made-to-order items through to small series. It goes without saying that they can also be integrated into production lines.

Typical applications:

- Barcodes, Serial numbers, Type plates
- Manufacturing data or times
- Product names
- „Best before“ dates
- Material names
- Marker lines for subsequent manufacturing steps
- Marking of components



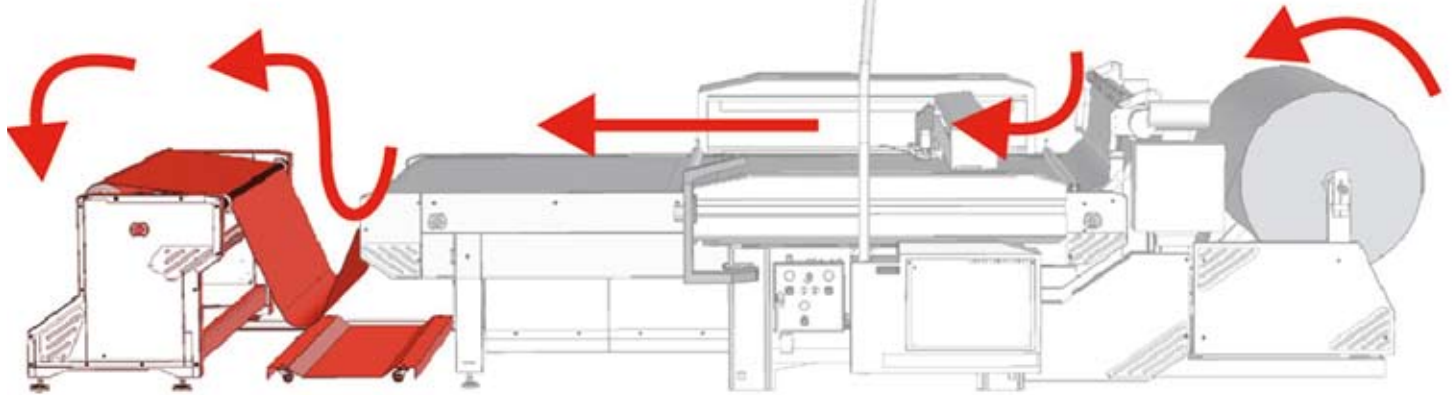
Typical materials:

- Wood
- Paper, cardboard
- Glass
- Leather, textiles
- Plastics
- Anodised aluminium

Onto the roll and off you go!

Winding Unit - rewinding of textiles after laser machining

IF YOU UNWIND, YOU PROBABLY MUST ALSO REWIND. THIS IS NOT A SLOGAN, BUT SOMETIMES A PRACTICAL OPTION FOR EUROLASER CUTTING SYSTEMS USED IN THE INDUSTRIAL PROCESSING OF ROLL MATERIAL.



The winder is positioned at the end of the process and enables:

- Roll material with widths of 1.3 m to 3.2 m to be rewound
- Material feed and removal to be fully automated
- An appreciable saving in working time, as there is no need for manual collection

The goods are rapidly removed by means of a pneumatic expansion shaft with practical hinged bearings. The winder also offers many useful features:

- Clockwise-anticlockwise winding
- Bale diameter up to 1 m
- Bale weight up to 200 kg
- Automatic or manual option
- 2-stage winding speed depending on bale diameter
- Sensor loop control
- Automatic remote control
- Overload detection and status display on central control panel

Functional descriptions

Automatic mode

The material to be processed is initially fixed manually and adequately secured on the clamped core roll. In automatic mode, winding can optionally be carried out clockwise or anticlockwise when the LCS is switched on. The winder is driven automatically using adjustable optical sensors for controlling the loop. The winding speed is adjusted in two stages depending on the bale diameter. If the bale is too heavy or if the sensor control fails, the motor drive switches off automatically in the overload range. A status alarm is then output centrally on the LCS control panel.

Manual mode

The winder can be switched to manual for clamping, setting up or removal and for unwinding. Clockwise-anticlockwise operation is also possible in this mode. The sensor control is bypassed.

First the idea – then the implementation, a brilliant innovation from eurolaser.



Our automation concept in textile processing is rounded off with the new winding unit





Our motivation for even more success

Get more out of your system!

EUROLASER IS NOW OFFERING A NEW AND UNIQUE SERVICE, ONE THAT YOU WILL FIND NOWHERE ELSE ON THE MARKET: AN ADDITIONAL INDIVIDUAL CONSULTATION THAT IS COMPLETELY FREE OF CHARGE. DRAWING ON OUR MANY YEARS OF EXPERIENCE IN LASER APPLICATIONS WE OFFER YOU AN APPLICATION-SPECIFIC SYSTEM OPTIMIZATION THAT WILL ENABLE YOU TO EXPLOIT YOUR EXISTING RESOURCES TO THE FULL AND TO DISCOVER UNUSED POTENTIAL.

Unbalanced performance



Balanced performance with added value





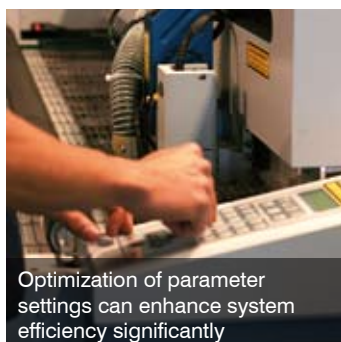
Customers reap the benefit of our experience thanks to our new Customer Relationship Management, so existing resources can be put to even more effective use

Nothing to lose; everything to gain!

Our continuous exchange of information with customers from all market segments of trade and industry enable us to provide you with a unique, wide-ranging, cross-sector horizon of knowledge and experience. Reap the benefit of our interesting suggestions and put them to profitable use.

Laser know-how supplied free domicile by eurolaser!

Application-specific system optimization is not just a theory. Instead it is your PLUS in laser manufacturing and production planning. We bring our knowledge, our experience and possible concepts as well as automation modules to you on your own premises. Give it a try.



Optimization of parameter settings can enhance system efficiency significantly

Ground-breaking methods for a demanding service !

Our specially trained experts, who come to us from the user side, optimize your work procedures and processes and the use of existing resources in cooperation with your own employees. And as an added bonus you boost job satisfaction, work safety and you save energy and processing materials. We help you to clarify any unsolved questions and uncertainties where operation is concerned.

KNOW-HOW, THAT PAYS OFF!

Unique on the market and exclusively for you:

- Analysis of your work processes
- Optimization of the system by improving the parameter settings
- Pinpointing new markets and additional potential
- Elimination of weak spots
- Suggestions for improvement regarding updates, options and system expansions

Your benefits:

- Up to 50 % increase in productivity or reduction in costs
- Development and consolidation of your know-how
- Enhanced quality of your products
- Your knowledge base always kept up to date with the latest developments
- Shorter production planning times
- More efficient use of existing resources

We are never satisfied until you are!

André Wolsing, to take over Customer Relationship Management for Central Europe.



He has many years of experience as a system operator on a eurolaser laser system making him the ideal partner for our customers. His thorough knowledge of the issues and demands of the market put him in a position to optimize processes and handle all individual requirements ideally.

André Wolsing, our new Customer Relationship Manager for Central Europe

The XS-610 laser system – our all-rounder!

Flexibility with laser technology

THE TYPES OF MATERIALS USED NOWADAYS ARE BECOMING MORE DIVERSE ALL THE TIME WHILE CUSTOMER REQUIREMENTS ARE BECOMING MORE SOPHISTICATED AND DEMANDING. A PRODUCTION SYSTEM THAT IS AS FLEXIBLE AND ACCURATE AS POSSIBLE WHILE AT THE SAME TIME REMAINING PROFITABLE IS WHAT IS NEEDED TO MEET THESE VOLATILE MARKET REQUIREMENTS. WHAT SPECIAL SOLUTIONS DOES THE USE OF INNOVATIVE LASER MANUFACTURING TECHNOLOGY HAVE TO OFFER IN THIS RESPECT?

Efficient and flexible production

In the case of the XS-610 laser system eurolaser has compressed its experience gained through the industrial use of laser machines to create a new compact laser system. It features outstanding cutting quality and engraving with a resolution of up to 1200 dpi while at the same time offering an extremely fast processing speed. This combination is unique on the market. The laser system can be used

just like a desktop printer with all the standard file formats plus the modern colour touch screen with its user-friendly menu navigation make operation child's play.

"Fastest laser engraver in its class"

Whenever required the system can be expanded to include dedicated automation for textile applications thanks to the newly

developed Add-on technology for which a patent is pending. This means that rolled materials can now be processed. The material is transported directly and automatically from the roll and into the laser system where it is then processed and finally conveyed to the discharge side.

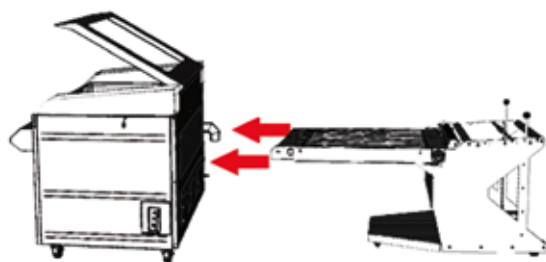
It takes just a few moments to install this optional equipment, which can be removed again

just as quickly. It opens up whole dimensions in material processing and is now available for the XS-610 laser system!

This symbiosis of compact standard use and optimum automation for serial production has huge future potential.

"Simple automated work"

A CCD camera used for optical recognition of position markings



The conveyor system, which has a patent pending, takes just a few moments to install and remove



Add-on Technology

Flexibility and benefits for the user – a eurolaser philosophy. You will find here a symbiosis of compact standard utility and optimum automation for your serial production. Optional Add-ons that can be removed again quickly and easily in order to start with other applications immediately.



rounds off the range of laser engraving and cutting systems. Printed as well as embroidered or glued markings can be recognised. Even the recognition of clear patterns is possible. The captured data are used to position the laser beam automatically over the workpiece, so exact processing of the print contour is carried out automatically. The eurolaser XS-610 offers the user a processing area of 900 x 600 mm. Anyone requiring more space can choose a processing area measuring up to 3,200 x 3,000 mm from our system and machine range.

An endless variety of materials and forms. A wide range of materials can be processed with laser light, these include wood, plastics, coated metal, textiles and paper to mention just a few. The processing of acrylics in particular has seen contactless laser production edging out conventional processing methods such as sawing or milling. The soiling caused by chips typical for conventional processes is a thing of the past. There is no additional expense for finishing work either, as is the case with polishing or flame chipping to create transparent cut edges in acrylic. Absolutely clear and smooth cut edges on every type of contour can be achieved in a single work step with laser technology.

“Universally applicable but nevertheless the specialist in its discipline”

However, there are considerable benefits for the user where other materials are concerned in addition to just the particularly filigree cuts. For example welded cut edges can be achieved for many materials. This prevents the intrusion of dirt or water in the case of multi-layered foils, for example, or results in lint-free edges in textiles. This modern CO₂ laser technology requires virtually no

Flexible application options with the XS-610 laser system.



available for many different areas of application. In other words maximum efficiency for the user with the best possible results. Cutting, engraving and marking is possible in one single job.

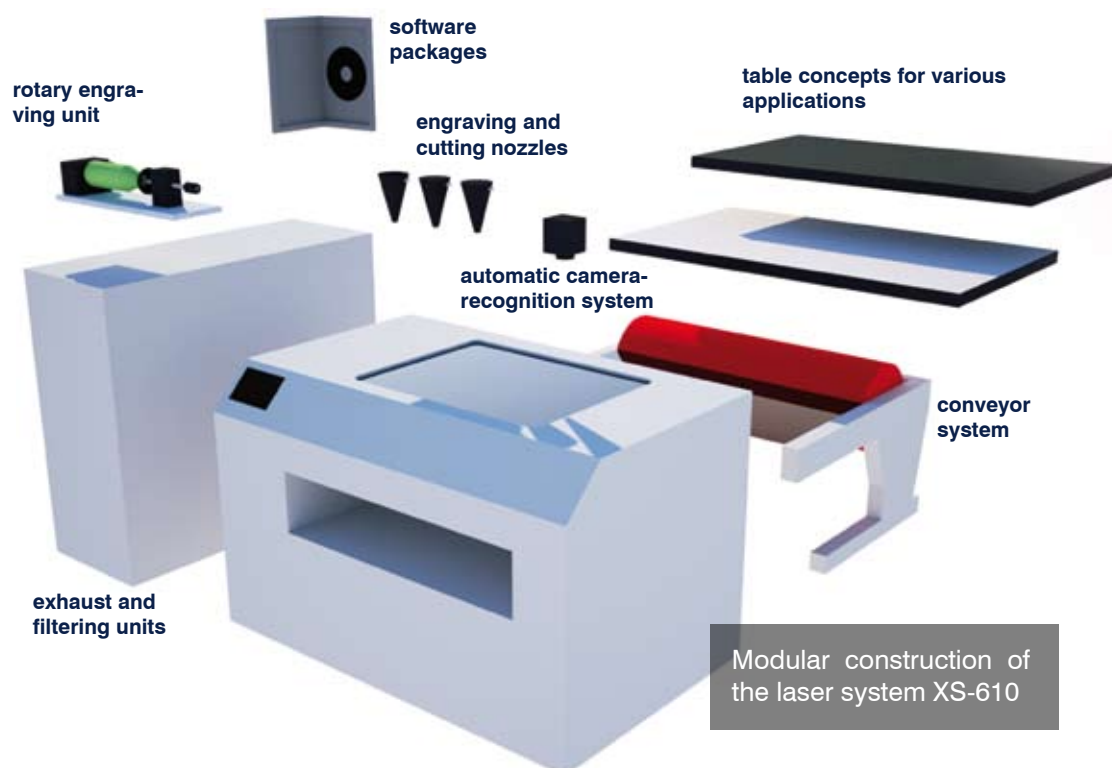
“To round off – rotary engraving”

The rotary engraving unit – eurolaser's solution for the engraving of round workpieces such as pens, bottles or thermos flasks. The workpieces are clamped between the ends of the mounting. A motor drives the mounting inline with the patterns to be engraved. Endless engraving over the complete workpiece can be achieved thanks to the accuracy of the engraving unit. Again this is an option that can be used quickly and easily thanks to its „plug and play“ technology.

Its uses are virtually unlimited and almost all customer requirements can be met. More possibilities thanks to complete flexibility plus top efficiency due to fast and simple machining all add up to more jobs accomplished a day and the resulting increase in turnover. ■

maintenance and, when compared to mechanical tools (knives, mills, saws), it always remain “sharp”.

The use of specially coordinated cutting underlays and powerful exhaust concepts mean that ideal customized solutions are



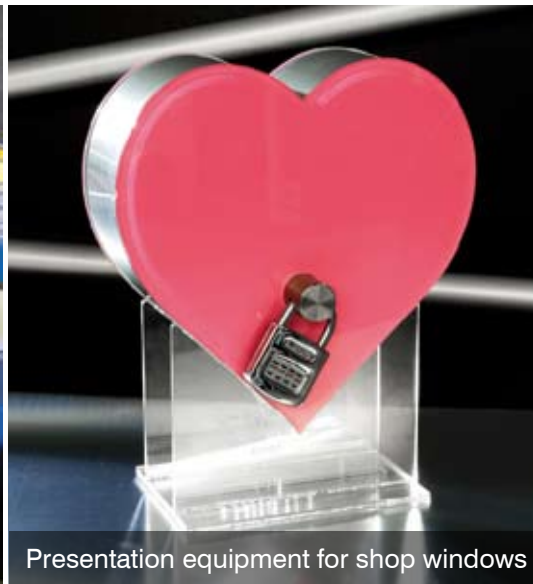
Modular construction of the laser system XS-610

Successful eurolaser customers

Stylish communication ideas that promote sales



Machining of acrylics on the eurolaser system



Presentation equipment for shop windows

IS THERE ANYONE WHO DOES NOT ENJOY STROLLING AROUND SHOPPING ARCADES AND GOING HOME PLEASED WITH THE PURCHASES THEY HAVE MADE? BUT WHY DO WE PREFER SHOPPING IN SOME SHOPS RATHER THAN OTHERS AND WHY DO CERTAIN PRODUCTS ATTRACT US MORE THAN OTHERS? THE SECRET LIES IN THE PRESENTATION OF THE PRODUCTS – AN AREA IN WHICH EFFEKT GRAFIK WERBETRÄGER GMBH & CO. KG IS A SPECIALIST.

Each of us is confronted daily with anything up to 7000 advertising messages. Advertising campaigns are exposed to fierce competition where attracting the attention of customers is concerned. That is why optimising the effectiveness of advertising takes on a very important role. Not only must messages be striking and distinctive, to a certain degree they must also have an element of surprise and must match the product perfectly.

Customers from both home and abroad come to Effekt Grafik with just such demands. What they are looking for is a highly efficient and creative partner for the advertising and display area.

Effekt Grafik Werbeträger GmbH & Co. KG has more than 40 years of experience in the sector of

print and plastics technology at its fingertips. Its extensive product portfolio includes screen printing as well as digital printing, plotter technology right on down to plastics processing and

the creation of displays. Personal consultations, the development and conceptual design of customised, elegant solutions as well as actual processing and professional assembly are all part of the service.

Their motto is: all from a single source! Effekt Grafik sees itself not simply as a reliable supplier, but also as an imaginative solver of problems.

Thanks to an international and inter-disciplinary network of partner companies the complete range of sales requirements can be met, so that shop-in-shop systems, shopfittings and fair graphics pose no problem. Whether wood, metal, glass, plastic is used or the diverse possibilities offered by LED technology, the promotional and communicational ideas can be given a stylish appearance.

Since the end of the nineties Effekt Grafik has been using a eurolaser system for acrylic glass processing. The reasons for this are obvious: absolutely clear and



High-quality displays for presenting spectacles

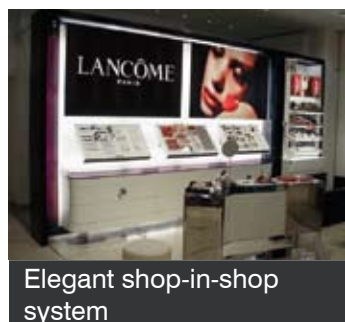
smooth cutting edges on any desired contour can be achieved with laser in just one job setup and the results, in cutting as well as detailed engravings, are always impressive. In addition contact-free cutting with laser offers further benefits, because it ensures very simple loading and unloading of the material. The workpiece no longer needs to be clamped or fixed so preparation time drops to almost zero. The surface of the material is not damaged or soiled because there are no chippings.

Exclusive displays for the cosmetic branch, large commercial groups, manufacturers of sports articles and many, many others

are produced with the laser system. Other fantastic effects can be achieved with the use of screen printing or digital printing. Décor, colours and logos enhance the appearance and give the displays that special touch.

Johannes Weeverink, CEO: "Thanks to the laser technology from eurolaser, Effekt Grafik is in a position to meet the most demanding customer requirements with a high degree of quality and accuracy."

The combination of fresh ideas, precious materials and high-quality printing processes all add up to create tailor-made acrylic products for every occasion. ■



Elegant shop-in-shop system

Effekt Grafik Werbeträger GmbH & Co. KG
Weidenstraße 42 a
46395 Bocholt
Germany
Tel.: +49 (0) 2871/27570-25
info@effekt-grafik.de
www.effekt-grafik.de



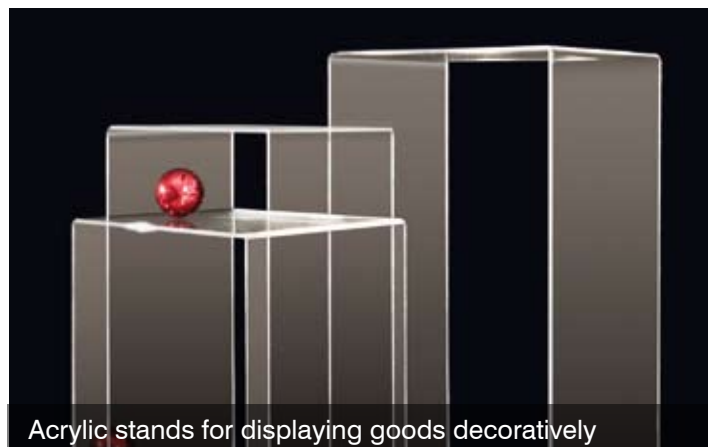
Elegant counter display for sales promotion at retailers



Printed dispenser for cosmetic and drug store products



Eye-catching product presentation with illuminated acrylic



Acrylic stands for displaying goods decoratively

Special little extras and accurate processing down to the last detail give clothes a high-quality and elegant appearance. But what is it about designer clothes that make them so attractive? Why do they attract so much attention and how are these unique outfits actually made? Have you ever asked yourself that question?



The finest design – cut with laser

eurolaser goes Haute Couture

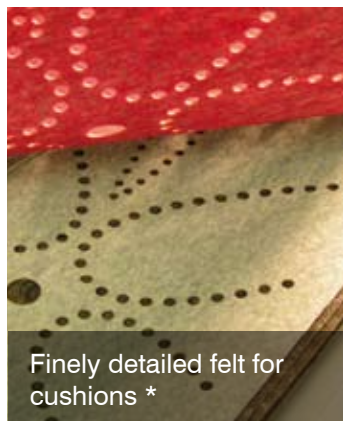
What sets designer pieces apart is often the unusual ideas behind them and the high-quality implementation of such ideas. Complex patterns made up of many individual filigree and consistent details are what make the difference. This combination of complexity and high-quality processing is very difficult to achieve manually and is therefore very expensive - a task for the laser beam!

gy or that it can only be financed by large production lines. But that is just not true. Small series or even one-off pieces can be produced efficiently with laser so that the investment in a laser system quickly pays off.

The question now arises as to whether the implementation could not be just as easily achieved with conventional cutting methods and what the advantage of laser is.



Designer leather bracelets – cut with laser *



Finely detailed felt for cushions *



Finely cut details in black leather *

eurolaser North America (Laser Cutting Shapes) from Ohio, USA offers many different customers from the textile branch a comprehensive service – one that in the meantime is in ever greater demand. Everything is supplied from a single source, from data preparation of the designs right through to the cutting of the textiles. Laser is ideally suited for both small production lines as well as for the industrial manufacture and one-off production of haute couture designers.

This is how Vadim Daskal, President at Laser Cutting Shapes, explains it: "Laser cutting is accurate, the level of repeatability high, interwoven details can be achieved without problem and laser operation is virtually wear-free as well as contact-free. One of the biggest advantages is that the cutting edges of most texti-

So to sum up, even small series and one-off articles of clothing can be produced economically and with a high level of quality. The time saved by the use of laser can be more productively used for sewing or other creative processes.

It makes no difference whether it is silk, wool, cotton, leather, neoprene, spandex or other synthetics you wish to cut; all materials can be cut cleanly with laser. The advantage of welded cutting edges makes itself felt in particular where synthetic materials are concerned.

Making an impression can be so easy!

You hear repeatedly that it is only the leading fashion houses that can afford such a technolo-

les are automatically welded so there is no fraying or lint."

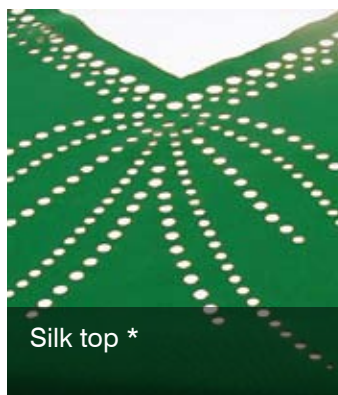


Laser marking in leather



Filigree leather application

www.lasercuttingshapes.com



Silk top *



Elegant customised fashion thanks to laser cutting *

eurolaser – Staff News

New recruitments

Name	Profession	Start of employment
Wolfram Kühmayer	Area Sales Manager	01.05.2010
Susanne Wölkl	Marketing assistant	15.06.2010
Holger Jastrow	Specialist for warehouse logistics	23.06.2010
Reinhard Heibutzki	Product Manager	01.08.2010
Ramona Bauermeister	Assistant for occupational safety	01.08.2010
Tobias Gruner	Specialist for warehouse logistics trainee	01.08.2010
Gregor Bast	Specialist for warehouse logistics trainee	01.08.2010
Dennis Widemann	Industrial clerk trainee	01.08.2010
Tina Rackmann	Industrial clerk trainee	01.08.2010
Tamara Mintel	Industrial clerk trainee	01.08.2010
Rashad Khan	Industrial clerk trainee	01.08.2010
Nika Hölandt	Industrial clerk trainee	01.08.2010
Susann Scholle	Office communication clerk trainee	01.08.2010
Sebastian Schrick	Apprenticeship in mechatronics	01.08.2010
Dawid Kobylka	Apprenticeship in mechatronics	01.08.2010
Andreas Demir	Purchase clerk	15.08.2010
Florian Meene	Designer / Development	01.09.2010
Stephan Dylla	Area Sales Manager	01.10.2010
Georg Schmitt	Applications technician	01.11.2010
Rainer Wesner	Service technician	01.11.2010
Tatjana Zips	Budget-side organisation	01.11.2010
Waldemar Metzger	Specialist for warehouse logistics trainee	01.11.2010

Anniversaries

Name	Date	Years
Wassilij Weigandt	01.07.2010	10 years
Peter Neumann	01.07.2010	10 years
Robert Güttler	01.02.2010	5 years
Ralf Hinrichs	01.09.2010	5 years



Wassilij Weigandt



Peter Neumann



Robert Güttler



Ralf Hinrichs

Marriages

Name of the married couple	Date of the marriage/Place
Lynn & Björn Engler	09.07.2010 in Winsen / Luhe



Lynn & Björn Engler

Examinations passed

Name	Date	Profession
Daniela Rahr	17.06.2010	Office administrator
Jan Blewonska	28.06.2010	Mechatronics

Editor:

eurolaser GmbH
Borsigstraße 18
D-21339 Lüneburg

Telephone

+49 (0) 4131 9697-500

Fax

+49 (0) 4131 9697-555

Internet

www.eurolaser.com

E-Mail

sales@eurolaser.com

eurolaser
Partner for your success.